



CARE TODAY FOR TOMORROW

*Building a healthier  
future. Together*

2022-2023

# Annual Report

**ASHTON MARTIN, RN**  
QE NICU



# Message from Chair & CEO

**The extraordinary health care teams at Queen Elizabeth Hospital deserve medical equipment to match their capabilities.**

That's where QEH Foundation donors shine! It is through your kindness that the QEH health care team has state-of-the-art medical equipment to help diagnose, treat, and save lives. This annual report will share just a snapshot of the incredible advancements made possible this year with your generosity.

The compounding effects of COVID and Hurricane Fiona reminded Islanders of the important role that the QEH plays in emergency preparedness. When our Emergency Department needed new equipment for trauma care, Friends for Life donors answered the call.

You responded quickly to the need for a new panda warmer for the Emergency Department amidst a nation-wide surge in infants with Respiratory Syncytial Virus (RSV). More than 230 donors came together to raise over \$50,000 in less than a week!

Mental health care services are expanding at the QEH and the importance of strategic and sustainable fundraising has never been more evident. We established an ignition fund to not only equip the new Mental Health & Addictions Emergency Department and Short Stay Unit, but to also prepare for future initiatives that strengthen mental health and addictions care for Islanders.

Our second annual Big Day of Giving was an outstanding success, raising over 40% more than our inaugural year, an impressive show of support that impacts many areas of our hospital.



We've welcomed 87 new monthly donors this fiscal year. This dependable revenue allows us to commit to unexpected urgent needs without delay, which can happen in a hospital of our size with more than \$7 million in medical equipment needs each year.

You, our cherished donors, play such an important role in the life-changing moments experienced every day by patients and their loved ones at the QEH. Thank you for supporting your Island community by making the QEH a priority in your giving.

Sincerely,

A handwritten signature in black ink, reading 'John Gaudet'.

**John Gaudet**  
Chair, QEH Foundation  
Board of Directors

A handwritten signature in black ink, reading 'Tracey Comeau'.

**Tracey Comeau**  
CEO, QEH Foundation

# Board of Directors



**JOHN GAUDET**  
Chair



**PATSY MACLEAN**  
Past Chair



**JOHN SCALES**  
Vice Chair



**BRIAN THOMPSON**  
Secretary



**MICHAEL FITZPATRICK**  
Treasurer



**TRACEY COMEAU**  
CEO



**DR. AJ BISWAS**



**TERRY CAMPBELL**  
QEH Administrator



**VALERIE DOCHERTY**



**JENNIFER DUNN**



**JULIE HAMBLY**



**LAURA-LEE LEWIS**  
President,  
QEH Auxiliary



**JENNIFER MACPHERSON**



**PETER MCCRADY**



**ALEX SMITH**



**LIAN ZHANG**

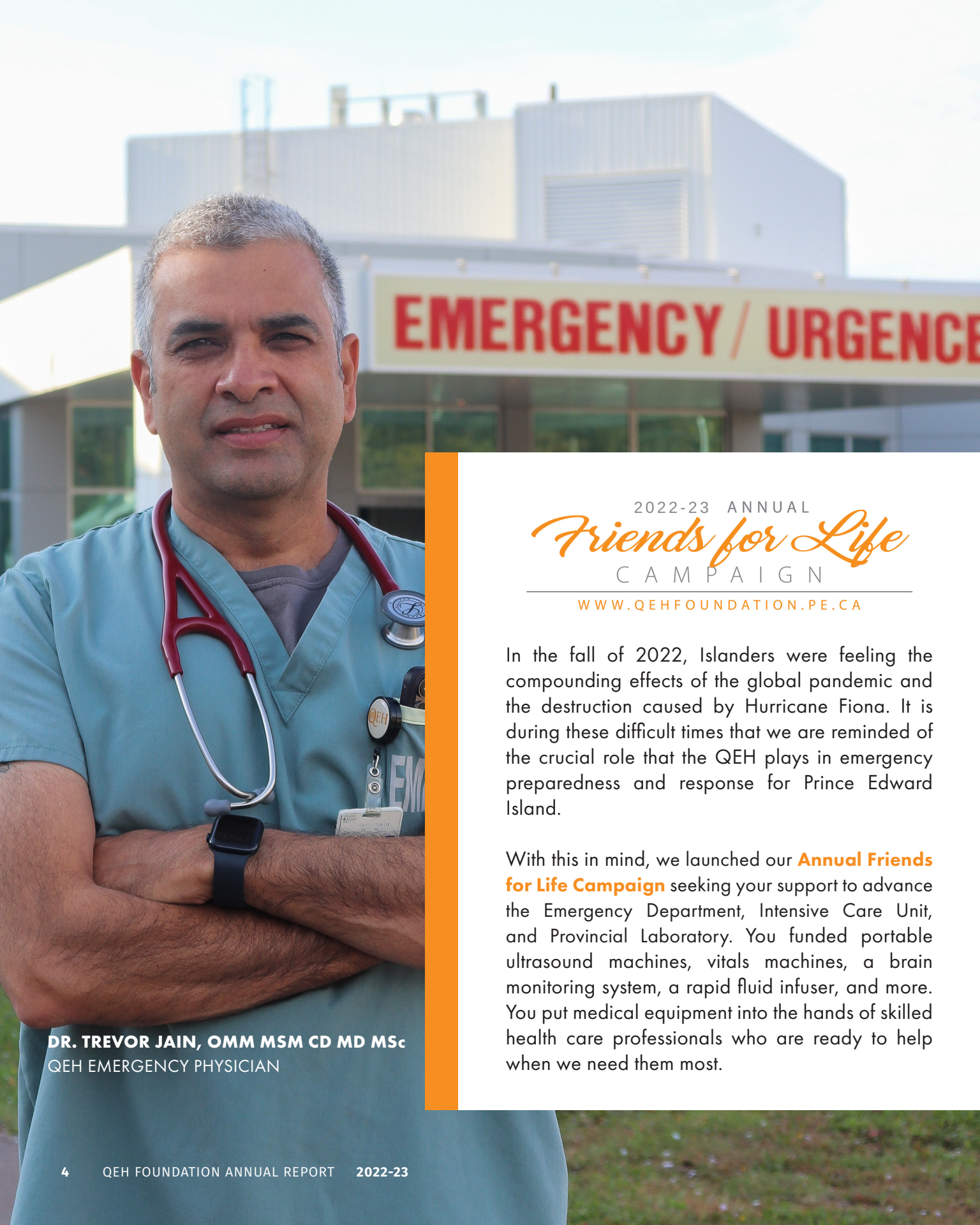
## Our Mission

The mission of the Queen Elizabeth Hospital Foundation is to raise funds for medical equipment for the Queen Elizabeth Hospital.

## Our Vision

An inspired community, investing in health care, meeting the medical equipment needs of the QEH.





**DR. TREVOR JAIN, OMM MSM CD MD MSC**  
QEH EMERGENCY PHYSICIAN

2022-23 ANNUAL  
*Friends for Life*  
C A M P A I G N

[WWW.QEHFOUNDATION.PE.CA](http://WWW.QEHFOUNDATION.PE.CA)

In the fall of 2022, Islanders were feeling the compounding effects of the global pandemic and the destruction caused by Hurricane Fiona. It is during these difficult times that we are reminded of the crucial role that the QEH plays in emergency preparedness and response for Prince Edward Island.

With this in mind, we launched our **Annual Friends for Life Campaign** seeking your support to advance the Emergency Department, Intensive Care Unit, and Provincial Laboratory. You funded portable ultrasound machines, vitals machines, a brain monitoring system, a rapid fluid infuser, and more. You put medical equipment into the hands of skilled health care professionals who are ready to help when we need them most.





## 2nd Annual Big Day of Giving

The Queen Elizabeth Hospital Foundation's **Big Day of Giving** took place on Wednesday May 24th, and donors responded in a BIG way! The second annual fundraising day was an outstanding success, raising \$861,061.

Specialized health care teams at PEI's largest hospital care for Islanders from East Point to North Cape and everywhere in between. That was certainly reflected in the donations we received from grateful donors across the province and beyond.



The New London Women's Institute presenting a cheque on the Big Day of Giving.





# QEH FOUNDATION'S YULETIDE GALA AUCTION

Saturday, November 19, 2022

The QEH Foundation's **Yuletide Gala Auction** returned to an in-person event in 2022 for the first time in two years. The event, with presenting sponsor CN and diamond sponsor Cavendish Farms, raised \$367,048 to fund priority medical equipment for the provincial laboratory at the QEH.

**FROM LEFT:** Carolyn McCarville, Supervisor of the Hematology Laboratory and Shane Buchanan, Manager of Laboratory Services



On June 14, 2023, the Rotary Club of Charlottetown Royalty hosted the 20th annual **Harry MacLauchlan 'Great Day' Fore Health Memorial Golf Tournament** presented by Fair Isle Ford. With \$60,134 raised, the tournament's cumulative fundraising total for the QEH Foundation is now more than \$1 million.

**FROM LEFT:** Kathryn MacLauchlan Howe, representing the MacLauchlan Family; John Scales, QEH Foundation Board Vice Chair; Shawn McLernan, Chief Executive Officer, Fair Isle Ford, Presenting Sponsor; Mike Hennessey and Jamie Currie, Rotarians and Event Co-Chairs





# Panda Warmer Appeal

As we were preparing for our Big Day of Giving, we received an urgent request for help from the Provincial NICU that just could not wait. With a nation-wide surge in Respiratory Syncytial Virus (RSV), the Emergency Department had seen a rapid increase in critically ill infants and needed a modern Panda Warmer at a cost of \$41,722.

More than 230 donors from across PEI and across the country came together with an outpouring of support for our Island's tiniest patients. **Thanks to you, our dear donors, the QEH Emergency Department has a new Panda Warmer.**

**FROM LEFT:** Chris Lee, Respiratory Therapist; Ellen Stetson; Neonatal Nurse Practitioner; and Emily Brothers, RN



## QEH Foundation ULTIMATE SHED GIVEAWAY

The QEH Foundation **Ultimate Shed Giveaway** brings together community-minded individuals in PEI's construction, design, and building supply industry to raise funds for priority medical equipment needs at the Queen Elizabeth Hospital.

The 2023 Ultimate Shed Giveaway: Cedar Shed edition raised more than \$80,000 for breast health at the QEH.

**FROM LEFT:** Sponsors Jennie Arsenault, Arsenault Bros. Construction; Jillian Sexton, Sherwood Timber Mart; and Sara Dykerman, Plank & Pine Interior Design







# Mental Health & Addictions Ignition Fund

Foundation staff touring the site of the new Mental Health and Addictions Emergency Department & Short Stay Unit at the QEH.

**With growing awareness and focus on mental health well-being, there is a greater need for urgent mental health and addictions care in Prince Edward Island.**

To help address this need, the PEI government is constructing and staffing a new Mental Health & Addictions Emergency Department & Short Stay Unit (MHA ED/SSU) which will be co-located with the QEH Emergency Department. Future plans include upgrades to tele-psychiatry equipment and the development of a mental health and addictions child and youth acute care unit.

To support these transformative initiatives and future initiatives that strengthen mental health and addictions care, the QEH Foundation created a designated **Mental Health & Addictions Ignition Fund**.

Donations to this fund will be put to work equipping the new MHA ED/SSU at the QEH. The first of its kind for the Foundation, this ignition fund will also expedite the equipment-funding process by accepting gifts in advance that can be committed immediately when mental health and addictions equipment needs arise.

## Thank you to our Kickstarters!

Several incredible gifts kickstarted the Ignition fund, including generous donations from Medavie, Noreen Corrigan, and the Estate of Betty Large.



# Medavie

On January 24th, 2023, the QEH Foundation launched the Mental Health & Addictions Ignition Fund. This new initiative is supporting medical equipment needs for upcoming expansions to the mental health services delivered at the Queen Elizabeth Hospital.

**In a tremendous show of support, Medavie, through the Medavie Foundation, kickstarted the fund with a gift of \$100,000.**

Medical equipment examples for the new mental health services at the QEH include: tele-psychiatry units, blanket warmers, automated medication dispensing cabinets, and specialized furniture to comfort patients in distress.

**PICTURED:** Matthew Crossman, VP Operations at Medavie Health Services, joins QEH Foundation Board Chair, John Gaudet, left, in front of the ongoing build of the new MHA ED/SSU at the QEH.





# Prince Edward Aqua Farms

**Thanks to a beautiful donation from Prince Edward Aqua Farms, the QEH has a new MRI ventilator that will support critically ill Islanders.** This extraordinary equipment is life-saving for patients who require diagnostic imaging but are unable to breathe on their own.

This donation also supported the Mental Health & Addictions Ignition Fund in support of transformative mental health care initiatives at the QEH.

This generosity from Prince Edward Aqua Farms, totaling \$100,000, will positively impact the lives of Islanders for years to come.

**PICTURED:** Prince Edward Aqua Farms owners John Paquet and David Cole with QEH MRI Technologist, Colin MacIntyre.







**QEH AUXILIARY GOVERNING BODY MEMBERS (FROM LEFT):** Barb Dunphy, Communications & Media Chair; Teresa McCabe, Past President; Debbie McLeod, Treasurer; Laura-Lee Lewis, President; Dorothy Johnston, Past President; Jennifer Darby, Secretary; Kathleen MacDonald, Patient Services Chair; and Tracey Comeau, Program Chair

# QEH Auxiliary

**The QEHAuxiliary has donated more than \$130,000 this year to support priority medical equipment needs at the Queen Elizabeth Hospital.** During our Friends for Life Campaign the dedicated group gave \$50,000 to fund a level-1 rapid fluid infuser for the Emergency Department.

During the QEHAuxiliary Big Day of Giving, the Auxiliary presented a cheque for \$80,000. This beautiful gift helped fund the purchase of new x-ray machines and supported the Mental Health & Addictions Ignition Fund. We're so grateful for the QEHAuxiliary and their dedicated volunteers for this incredible support.

## Self-testing for HPV

As of May 2023, Prince Edward Island is among the first provinces in Canada to replace the traditional pap smear with HPV testing – a more reliable test that can be done less often if you receive a negative test.

The province is also working to establish self-testing for patients. The final piece of equipment required for this program, a Liquid-Based Cytology (LBC) system, was purchased thanks to a \$145,000 donation from the QEHAuxiliary made in our last fiscal year.

The QEHAuxiliary is comprised of passionate Islanders who continue to have a significant impact on health care in our province. This donation will surely be a legacy moment in their impressive history.





# Master Packaging Inc.

Staff of the QEH Diagnostic Imaging Department are praising the leading-edge advancements of two digital mammography machines installed in 2022, one of which was funded in its entirety by a commitment of \$600,000 from Master Packaging.

What's more, the new machine replaced an older model that Master Packaging funded in 2008.

With more than 8,500 screening and diagnostic mammograms performed each year at the QEH, it is easy to see just how many lives will be impacted by this equipment.

**PICTURED:** Master Packaging CEO Ms. Mary-Jean Irving, right, and QEH radiologist Dr. Kim Hender stand by the new digital mammography machine funded with a \$600,000 gift commitment from Master Packaging.



LEADERS IN PACKAGING SOLUTIONS

PAY TO  
THE ORDER OF

**Queen Elizabeth Hospital Foundation Inc.**

**Six Hundred Thousand**

/100 \$ **600,000**  
DOLLARS





## Happy Retirement!

With deep appreciation and warm wishes we celebrate the retirement of Helen Chapman, Director of Donor Relations. For 28 years Helen has played an important role in the growth and success of the QEH Foundation as a friendly and knowledgeable support to our cherished donors.

Since 1995 Helen has dedicated her career to raising funds for medical equipment needs at the QEH, and she's made many friends along the way! We are grateful that Helen has offered to lend her support to future projects.

## QEH: Your hospital away from home.®

Established in 2001 as a 501(c)(3) tax-exempt organization, the **US Friends of Queen Elizabeth Hospital** is the connection between our hospital and seasonal residents from the United States and their friends and families who want to support the medical needs of our Island's main referral hospital.



The Queen Elizabeth Hospital receives the greatest benefit – the security knowing that you care about our hospital and want to make a difference.

There are a number of ways to make a charitable gift through the U.S. Friends, including:

- An outright contribution online via PayPal or by cheque.
- A pledge to make an annual gift through preauthorized payment
- A bequest left in your Will to the US Friends of Queen Elizabeth Hospital Inc.
- A planned gift such as a charitable remainder trust.

Visit [qehfoundation.pe.ca/US-Friends](http://qehfoundation.pe.ca/US-Friends) to learn more.



# Because of you



**WESTON**

**WESTON** is a spunky 7-year-old from Bayside, PEI who received care at the QEH for Acute Lymphoblastic Leukemia. In 2023, he rang the bell at the QEH Pediatrics Department, signifying the end of his cancer treatment.

**Your gifts bring more life-saving medical equipment to Island kids like Weston.**



**SARA**

**SARA** from Mount Herbert, PEI was taken to the QEH for neurological symptoms. She spent two weeks undergoing numerous tests and consultations which led to her diagnosis of Functional Neurological Disorder.

**Your gift helps Islanders through every test and scan.**



**HANNAH + OLIVIA**

**HANNAH AND OLIVIA** were born prematurely in Halifax and had a very rare prenatal condition called twin to twin transfusion syndrome. At two months of age, Hannah struggled to gain weight, eat, and breathe on her own. She was transferred to the QEH where she would receive excellent care at the NICU for the next eight months. Today, Hannah loves dresses, sparkles, and glitter. She and Olivia are very into reading, colouring and enjoy playing outside with their neighbourhood friends.

**Your gifts help families receive the care they need close to home.**



# lives were changed.

**BABY MAREN** was born three weeks early in Summerside. She was transferred to the QEH by LifeFlight helicopter after experiencing respiratory distress at birth. Her Papa, QEH ICU Nurse Paul Higginbotham was there to meet her as she went into the care of the Island's NICU team. After being cared for at the QEH, she is doing well!

**Your gifts help keep families together, here in PEI.**

**MILOH** entered the world weighing 3 lb 7oz. He had to be on oxygen and CPAP, have a feeding tube, undergo phototherapy for jaundice, and be in an isolette to help him regulate his temperature. After almost three months in the NICU, Miloh is thriving and was finally able to go home.

**Your gifts help QEH medical teams provide the best care possible for patients and their families.**

**TWINS LEIGHTON AND LANDON** were born in 2023 to moms Hayley and Ashley of Cornwall, PEI. The boys spent 25 days in the Provincial Neonatal Intensive Care Unit here at the QEH and following that expert care, they are now happy, healthy, and doing well!

**Your gift helps care for our Island's tiniest patients.**



**MAREN**



**MILOH + JENNY**



**LEIGHTON  
+ LANDON**



# Special Fundraisers for the QEH

We are grateful for the many ways our community shows up for PEI health care. From bake sales and bike-a-thons to concerts and ceilidhs, we are thankful for the Islanders and community groups that support the QEH, a place that provides care to our family, friends, and neighbours every day.

There were over 50 special fundraising events in support of the QEH Foundation this year.



## Asian Heritage Month Celebration

PEI's first Asian Heritage Month Celebration was a vibrant showcase of the rich and diverse cultures of Asia. Businesses, organizations, and individuals in PEI and Toronto contributed a total of \$15,000 in donations to the QEH Foundation.



## Cool Kids Care

The student group 'Cool Kids Care' from Eliot River School donates to a different charity each month through ice cream fundraisers. The QEH was honored to receive a \$574.54 donation in December 2022.



## Brackley Beach Women's Institute

Members of the BBWI picked and peeled apples to fill and bake 58 delicious pies. Proceeds from their pie sale helped support the QEH and their community.



## Callum's Sunflowers

With help from her community, Nancy Russell organizes an annual sunflower sale in memory of her son, Callum. This year, Callum's Sunflowers raised \$1,988 in support of Pediatrics care at the QEH. With cumulative annual support, Callum's name will forever be remembered on our Donor Wall.





## PEI Mudrooters

What started out as friends racing through a dirt pit on PEI's south shore has grown into an event that includes racers from across the Maritimes. This event has raised a cumulative total of more than \$73,000 for the QEH Foundation.

## Ciaran's Pumpkin Sale

Ciaran chose to donate \$300 of his pumpkin sales to the QEH, a place that takes such great care of his mom. We look forward to seeing his pumpkins in the fall!

## Back2Basics2

TheFOLD's (For Our Love of Driving) 2022 premiere automotive car show featured some of the most unique and exotic vehicles from all over the eastern provinces of Canada. The show took place in Summerside and donated \$7,500 of the proceeds to the QEH.



In its 90-year history, **WO HE LO** has raised over \$1 million to fund medical equipment for the Provincial NICU. Wo He Lo's popular clothing sale had been cancelled since the onset of the pandemic, so members worked hard on an exciting new online auction in 2023 that raised more than \$46,000.





# Advancements in Cardiac Care

**Cardiac care at the Queen Elizabeth Hospital has reached a new level of excellence thanks to generous support from the family of Marjorie and the late Harry MacLauchlan.** The MacLauchlan family's longstanding commitment to Island health care has advanced medical equipment and technology throughout the QEH, most recently with a suite of advanced cardiac care equipment and technology.

The MUSE Cardiology Information System (CIS) launched Island-wide in the summer of 2023. This system allows upload of all data from cardiac function testing to a system accessible to all hospitals in PEI. This means that if a patient comes

to the QEH for an ECG and later finds themselves in another Island hospital, previous ECG results are at the physician's fingertips. This advancement in data transmission and reporting is an extraordinary step for Island health care that will not only benefit the QEH, but all cardiac patients across the province.

New ECG machines complementing the MUSE CIS are also supporting a trial of evening clinics that conduct cardiac monitoring until 11:30 pm. This trial has been very successful and has proven to be a great relief to Emergency Department staff.

The MacLauchlan family's most recent support to cardiac care has also resulted in new echo ultrasound machines, a cardiac stress testing system, and cardio day system for blood pressure monitoring. This outstanding philanthropy of the MacLauchlan family is improving Islanders' chances for optimal cardiac care outcomes.

"The Cardiac Care team is thrilled with the new MUSE CIS and grateful for the donation that made this advancement possible for PEI's cardiac patients."

**DR. STEPHEN WALSH, MD FRCPC**



# John and Sherry MacLeod

**John and Sherry are high school sweethearts who married in 1973. They built their home by the shore in Grand Tracadie.**

Sherry chose the Bank of Montreal — Commercial Division as her profession and John went to the shore to farm mussels and fish tuna. Since their retirement, Sherry remains close with her work colleagues and John still loves taking walks along the shore with his beagle, Cane.

In March, John and Sherry attended the QEH Foundation Will Power session with guest speakers Robin Aitken, a partner in the Charlottetown office of Cox & Palmer and Blair Corkum, a Chartered Professional Accountant. Donors who attended learned the benefits of estate and tax planning as it relates to charitable giving.

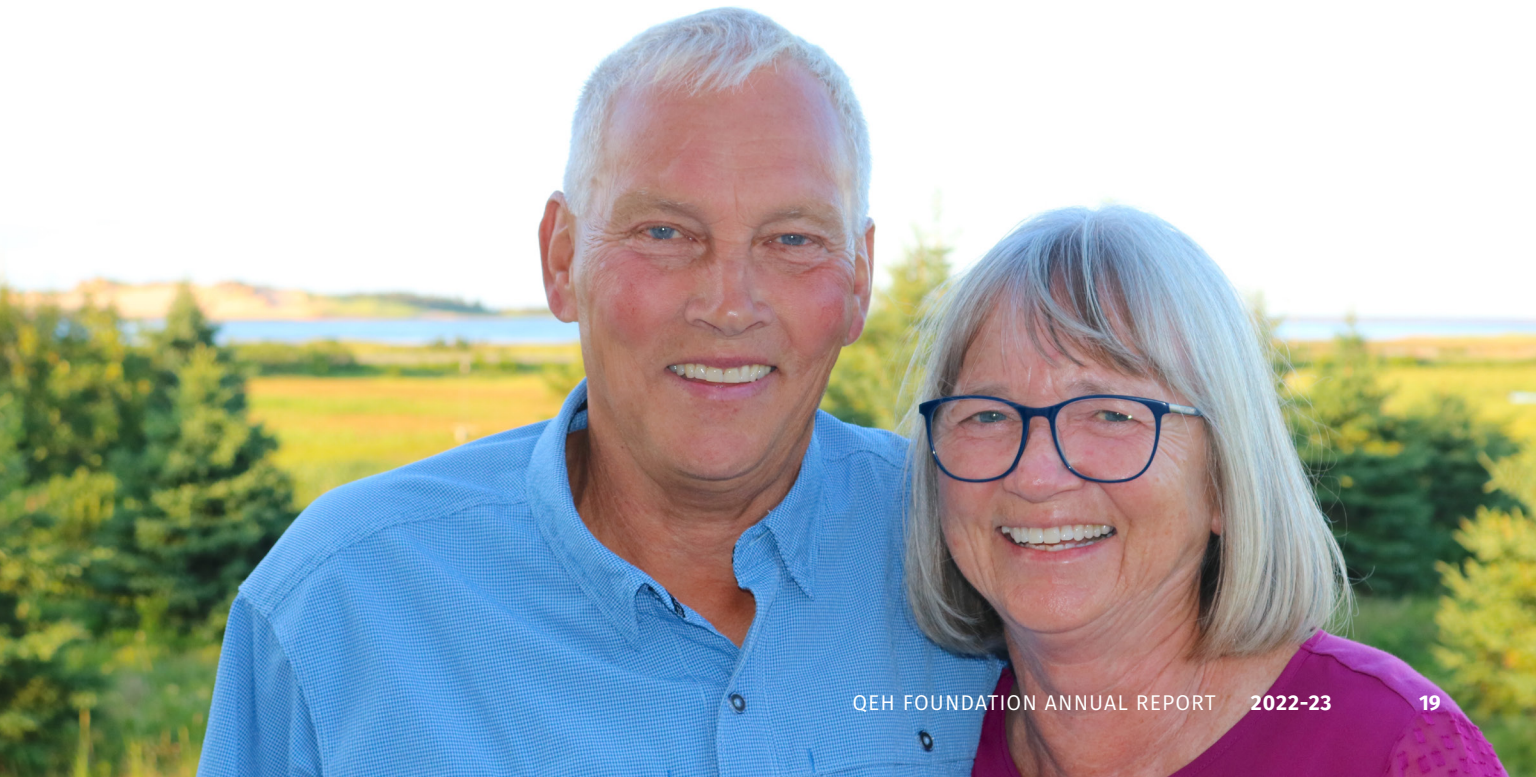
Like many small business owners, the couple purchased a life insurance policy as a safety measure.

After years of hard work, they were able to pay off the policy and the Will Power session helped them understand the tax advantages in donating it as a charitable gift in their lifetime.

John and Sherry agreed to share their story to inspire others who are in a similar situation with a policy that has served its purpose. With this gift, they also wish to thank QEH staff for John's wonderful care following his prostate cancer diagnosis in 2015.

## Gifts of Life Insurance

Gifts of life insurance policies are an affordable way to make a charitable gift. Donating insurance can increase your overall giving and provide immediate relief against present and future taxes. It is not subject to probate fees as it is processed outside the estate.







## Leave a Legacy

Planning for the future and helping Island families has never been so important.

The QEH Foundation has partnered with Will Power, a national educational campaign dedicated to inspiring more Canadians to contribute to the causes they care about, with a charitable gift in their Will.

Talk to your family about leaving a gift in your Will to the QEH Foundation. You can make a lasting impact on PEI health care while caring for the people you love.

To learn more, visit:

[qehfoundation.pe.ca/willpower](http://qehfoundation.pe.ca/willpower)

**WILL  
POWER™**

Support a charity in your Will

## Named Endowments

Gifts made to the **QEH Foundation Endowment Fund** are lifetime gifts that keep on giving. Alongside annual giving, these gifts enable the QEH to go beyond the standard of care and fund exciting new advances that enhance patient comfort and outcomes, well into the future.

Donors can set up a **Named Endowment** where the principal contributed by the donor is invested and the annual income from the fund supports the Foundation's mission to fund priority medical equipment. Each year, a report is provided to the donor about the impact of their Named Endowment Fund. A minimum contribution of \$100,000 is required to establish a Named Endowment.

### QEH Foundation benefits from the following Named Endowment Funds:

Anonymous (1)  
Banyan Tree Foundation  
George & Abba Bassett  
Hal & Janet Bevan  
Sandy & Donald (MacTavish) Bosovich  
Brad Richards Foundation  
Cavendish Farms  
George & Noreen Corrigan & Family  
Elizabeth Joan (Betty) Drysdale  
M. Eileen (McMillan) Fulford Memorial  
Doreen Gray Memorial

Gray Family Foundation  
H. Douglas & Rosemary Hill Memorial  
Arthur & Amy Johnstone  
Estate of Elizabeth (Betty) Large  
D. Alex & Kathleen MacDonald  
Harry W. MacLauchlan Memorial  
Milt & Arlene MacLean  
Wanda J. & Eric P. MacPhail  
Hon. Lloyd G. & Helen M. MacPhail  
Alex & Irene MacRae Memorial  
Evelyn Patricia Matheson

Estate of D. Lloyd Mathieson  
Kevin & Linda McKenna  
John Mitchell & Claire Nantes  
G. Keith & Jean Pickard  
David Rodd Memorial  
The W.H. Tidmarsh Foundation  
Estate of John H. Walker  
Vernon E. & Doris W. Williams Memorial  
Carl & Gayle Willis  
Estate of Sandra Younger

# Arthur and Amy Johnstone

Arthur Johnstone was born in Long River and began his career as a farmer, with his loving wife Amy, from Margate, by his side.

They later began a Texaco Bulk station which supplied service stations and home furnace delivery to Summerside and Western PEI. Arthur and Amy raised two children, David and Ruth, and were later proud grandparents to four grandchildren and three great-grandchildren.

As Arthur and Amy grew older, they moved to Whisperwood Villa where they reached a rare wedding anniversary milestone of 76 years together. Sadly, Amy passed away in 2021 and Arthur in 2022.

Arthur knew the benefits of donating securities as he had helped the New London Fire Department in 2019 by purchasing two used fire trucks and other equipment, through a shares transfer.



When Arthur was young, he had witnessed major fires in his community, and it was always a dream of his to someday help the brigade.

Communicating his intentions to family beforehand on his decision to name the QEH and PCH as beneficiaries of his Will was important to Arthur.

His family admires his decision to donate publicly traded securities, this time to help improve health care to Island families with the establishment of the **Arthur & Amy Johnstone Endowment Fund**.



One of the New London Fire Department trucks Arthur purchased, named in his honour.

## Publicly Traded Securities

Publicly traded securities can be a tax-efficient way to give. By transferring securities, donors eliminate taxes on capital gains and receive a charitable tax receipt for the full value of share transfer.





# Former nurse names QEH beneficiary in her Will, assisting mental health services

Betty's commissioned painting of Victoria Park is located at the PEI CTC's LINAC Corridor.

Charlottetown's Betty Large (formerly from Albany, PEI) was a dedicated registered nurse throughout her working career and a proud graduate of the PEI Hospital School of Nursing, Class of 1960. She worked as a School Public Health nurse during her early years before moving on to a successful career in real estate, for over three decades, prior to retiring.



Betty Large receiving her Legacy Society Lapel Pin from Lieutenant Governor Antoinette Perry at the 2017 QEH Foundation Legacy Tea.

Betty was a loving wife to her late husband, Raymond Peters, and a proud mother to Elaine Gaudet, who sadly passed from cancer in 1999 at the age of 25. Throughout her daughter's illness, Betty spent a great deal of time at the PEI Cancer Treatment Centre. After Elaine's passing, Betty decided to honour her, and staff who provided loving care, by commissioning a painting of the Victoria Park boardwalk which is displayed at the PEI CTC.

Betty continued her caring spirit by becoming a QEH Auxiliary volunteer at Lillibet's Gift Shop. She was a loyal member of the QEH Legacy Society, having named the QEH Foundation as a beneficiary in her Will to assist

with mental health care needs in honour of her late mother, Edith Crossman.

Betty was an active volunteer, often assisting in nursing homes. She was an avid walker, enjoyed curling, attending church, and loved the beach. She especially enjoyed spending time with her brothers and sisters, nieces and nephews, and her many friends.

Betty passed in February 2020 at the age of 80 years. Her bequest totals approximately \$430,000 and is invested in perpetuity to create the Estate of **Elizabeth (Betty) Large Endowment Fund**. Each year, the income will support acute mental health care at the QEH. Many Island families will benefit through Betty's incredible kindness.

# The W.H. Tidmarsh Foundation

**W. "Harry" Tidmarsh** was born in Charlottetown in 1882 and was a successful businessman, operating lobster canneries across the Island, a fox farm, and a wholesale business. In addition, he was the Founding President of the Rotary Club of Charlottetown. Mr. Tidmarsh passed away in 1960 and through his Will formed **The W. H. Tidmarsh Foundation.**

In 2023, The W.H. Tidmarsh Foundation donated \$500,000 to support priority medical equipment needs of the Provincial Urology Service at the QEH and overall men's health care.

The Tidmarsh Board designated the donation with \$300,000 for current urology care needs and \$200,000 to establish a named endowment fund to support future care of Islanders, in keeping with the QEH Foundation's tagline Care Today for Tomorrow.

**FROM LEFT:** Larry Sider, Director of The W.H. Tidmarsh Foundation; Jack Simmonds, Chair of the W.H. Tidmarsh Foundation; Dr. Daniel Costa, QEH Urologist; and John Gaudet, QEH Foundation Board Chair





# Celebrating Generosity

The QEH Foundation is pleased to recognize the following donors who, as a result of cumulative giving, will appear for the first time or move into new milestone giving categories on our Donor Recognition Wall located in the main lobby of the QEH.

## NAMED ENDOWMENT

**\$100,000+**

Arthur & Amy Johnstone  
Estate of Elizabeth (Betty) Large  
The W.H. Tidmarsh Foundation

## SILVER

**\$250,000 - \$499,999**

Anonymous (1)  
CN  
Hon. Lloyd G. & Helen M.  
MacPhail

## BRONZE

**\$200,000 - \$249,999**

Prince Edward Aqua Farms —  
Margaret Cole Memorial  
Provincial Credit Union

## MAJOR BENEFACTOR

**\$100,000 - \$199,999**

Canada Life  
Chinese Community of PEI  
Sylvia Dauphinee  
Alex & Valerie Docherty  
Medavie Health Foundation  
Michael & Patricia Schurman

## BENEFACTOR

**\$50,000 - \$99,999**

Suzanne Allan  
Atlantic Lottery Corporation  
Estate of Olive Barrett  
Jamie Dickie & Menna MacIsaac  
Reagh & Jill Ellis  
Scott & Laura-Lee Lewis  
Bruce MacDonald  
Dunstan & Heather MacDonald  
Matt Smith & Deborah MacMurdo  
Metro Home Building Centre  
Catherine A. Millar  
Jesse & Julie Rasch Foundation  
Dr. Cai & Erin Wadden

## PATRON

**\$25,000 - \$49,999**

Anonymous (3)  
Arsenault Bros. Construction  
David & Janice Beaton  
Russell & Linda Boyle  
Chris & Monica Brittain  
Cardigan Excavators  
Charlottetown Kin Club  
Wayne & Flora Dickieson  
Michael & Lorraine Dougan  
Sean Finn & Nicole Bélanger  
Gary & Lorraine Giddins

James & Shirley Good  
Cory & Tonya Gray  
Harness The Hope PEI  
Hector & Eleanor MacDonald  
David & Debbie Meyer  
John & Alta Mulligan  
Cathleen O'Grady  
Red Isle Produce  
Reliable Motors  
Kent & Inger Scales  
Sherwood Timber Mart  
W. Maureen Sinnott  
Small Investor Protection Assoc.  
Dr. V. & F. Smith  
Dr. A. Christine Veale  
Dale & Marlene Zajicek

## SPONSOR

**\$10,000 - \$24,999**

Anonymous (3)  
A Touch of Gold  
David & Colleen Arsenault  
Gail Barwise & Family  
Roger Birt Memorial  
Gordon & Barbara Campbell  
Rosemary Evans Memorial  
Fitzpatrick & Co.  
Sean, Cara & Ciaran Flanagan  
Mel Gallant

George & Beverley Gillespie  
 Bernard & Wendy Gillis  
 Ed & Pat Gillis  
 Archie & Linda Gordon  
 Mervin & Eleanor Holmes  
 The Inn at Bay Fortune  
 William & June Ives  
 J & S Sheet Metal  
 Rick & Jane Kennedy  
 Fred & Mary Laflamme  
 George & Jenny Likely  
 Lil Farm on the Jib  
 Josette Losier  
 Kenny Lutz  
 M & M Trucking  
 Alan & Nancy MacDonald  
 Dale & Marg MacKenzie  
 David & Susan MacKenzie  
 John & Camilla McAleer  
 Darcy & Charlotte McCardle  
 DiDi & Barb Murray  
 Dr. Kristy & Doug Newson  
 Dr. Laura O'Connor  
 PEI Fishermen's Association  
 Ruth & Joost Roggeveen  
 Wavell & Sandra Sabine  
 Nora Scales  
 Douglas & Dorothy Sherren  
 Kent & Elaine Smith  
 Dr. Jim & Anne Thompson  
 Dr. Betty Anne Younker

## **SUBSCRIBER**

**\$5,000 - \$9,999**

Bill & Mary Best  
 Elmer & Judy Blakely  
 Lynwood & Jean Blue  
 Dr. Colin Brown & Sacha Craig  
 Ruby Burns  
 Frank & Rosemary Butler  
 Callum's Sunflowers

Ceilidh at Kinkora  
 Chinese Community of Toronto  
 Brian & Ruth Clark  
 Dr. Maurice & Shirley Clark  
 Paul & Darlene Clark  
 Jim & Hilda Colodey  
 Confederation Centre of the Arts  
 Paul & Etta Connolly  
 Dr. Daniel & Nancy Costa  
 Susan Dalziel  
 Elizabeth Dewolf  
 Jeff & Carol Anne Dingwell  
 Joyce & Ron Doyle  
 Drs. Hickey, Burke & Associates  
 Mike & Phyllis Duffy  
 Enterprise Holdings Foundation  
 Dr. Shaun Ferguson  
     & Jessica McMullen  
 Jim & Phyllis Forsyth  
 Kathy Furness  
 Avi & Amy Goldberg  
 Golf for the QEH  
 John & Catherine Gordon  
 Green Gables & Andersons Creek  
     Golf Courses  
 Lisa Handrahan  
 Edward & Norine Hanus  
 Don & Leona Harris  
 Helping Hands Band  
 Friend & Florine Herring  
 Dr. Bernard & Johann Holland  
 Andrew Hughes & Oksana Laschuk  
 Islandsand Holdings  
 Dr. Colin & Colleen Jack  
 David & Karen Kerr  
 Brenda Large Memorial  
 Gerry & Ellen Lawless  
 Jim & Patsy Lee  
 Joe & Hazel MacDonald  
 Wayne S. MacKinnon  
 John & Sherry MacLeod  
 Billie & Elizabeth MacLeod

Jim & Dianne MacPhee  
 Wade MacPhee Memorial  
 Kay McIntyre  
 Karen Moore  
 MSM Restaurants  
 Gabriel Myra  
 Novus Glass PEI  
 One Sun Investment & Trading  
 Frank & Margaret Parslow  
 Lori Pendleton  
 Don & Ileana Pickard  
 Plank & Pine Interior Design  
 Rhyann & Ashlee Ramsay  
 Dr. David & Heather Reid  
 Alan & Lynn Rogerson  
 Dr. Wassim Salamoun &  
     Marie Salamoun-Dunne  
 David Shephard  
 Harry Smith & Jane Thomas  
 Robert C. Stevenson  
 Fred & Catherine Strickland  
 Sheila Sutherland  
 Phyllis Taylor  
 theFold  
 Bill & Margo Thompson  
 Lorna Thompson  
 Those Line Dancers  
 William & Donna Trainor  
 Vision Auto & Tire  
 VK Greenhouses  
 Edwina Watts & Rowan Beer  
 Louis & June Watts  
 Steve Webster -  
     Donald Webster Memorial  
 John & Jill Wood  
 Richard & Susan Young



# Remembering Loved Ones

The QEH Foundation wishes to thank the 170 Island families who chose the QEH to honour the memory of their loved ones. **JULY 1, 2022 - JUNE 30, 2023**

Hon. Doris M. Anderson	Hazel Doucette	Om Joshi	Sheila MacLeod	Myra Scott
Raymond J. Armstrong	Jamie Doucette	Barry Kelly	Stu MacLure	Anna-Marie Shepherd
Colleen Arseneault	Lorne Doucette	Joe Landrigan	Myrt E. MacNevin	Dorothy Sherren
Norman Avery	Sheena Dubois	Janice Landry	Bernard MacPhee	Herbert S. Simpson
Theresa Baker	Naomie G. Duffy	Art Lanigan	Wade MacPhee	Hugh Simpson
Kenneth M. Bell	Anthony J. Easterbrook	Elaine Large	Pauline McCabe	John F. Skinner
Thelma L. Bell	Don Elliott	Marion Large	Jim B. McCluskey	Lucy Smith
Verna Bishop	Gordon P. Farrar	Lester R. Larsen	Reta McGowan	Lowell Stead
Maurice Blake	Kathy Farrow	Michael R. Larter	Donnie McGuigan	Jean Steele
Gloria Bradley	Susan Feehan	Ron Lewis	Michael J. McKinnon	Alan L. Stevenson
Walter Bradley	Barbara Fisher	Daniel London	Audrey McLean	George Stevenson
Frances Burke	Allan Ford	Rosie Longaphee	Mitch McLean	Irene E. Stevenson
Nora A. Burke	Lloyd Ford	Charles Lund	Charlotte McLeod	Beth Stewart
Gerald O. Busch	Clarence Foster	Alex MacAulay	Gayle Mills	Roger W. Tanton
Frank Callaghan	Jim Foster	Kathleen M. MacBurnie	Kathy Mitton	Hon. Benjamin Taylor
Don Campbell	Dennis B. Friesen	Blair W. MacCallum	Steve Mollins	John A. Taylor
Edna Campbell	Leah M. Gallant	Don MacCormac	Errol C. Monkley	Eric Thomsen
Brian Carr	Velma F. Gallant	Katherine MacCormac	Margaret Newson	Mary Tierney
P. Gail Charman	George Garnhum	Bernard MacDonald	Dianne Nicolle	Dr. Charles Trainor
Kim Clements	Rev. Ian C. Glass	Cindy MacDonald	Patricia Orlowski	Joseph Trainor
Patsy Cook	Wayne Gray	Ione H. Macdonald	Diane E. Parsons	Kay Trainor
Wanda Corney	Francis D. Gregory	Lloyd S. MacDonald	Linda Phillips	Lianne W. Wadden
Theresa M. Costello	William B. Griffin	Samuel R. MacDonald	Courtney Pickard	Donald S. Webster
Robert Crane	Leonard Gunn	Teresa MacDonald	Merrill Pineau	Kory F. Wells
Alfie Cudmore	Edward Hanus	Douglas G. MacDougall	Cynthia Potter	Tracey A. Welsh
J. Allister Cummings	Sheila Hogan	Sterling MacDougall	Mervin Power	Gloria Whalen
Marlene Cummings	Dillon Hood	Glenda MacEwen	Marjorie Read	Lloyd White
Joan Currie	Amy Hughes	Mary MacIntyre	David L. Reid	Ruth Whiteway
Phyllis M. Currie	Geoffrey B. Hussey	Mait MacIsaac	Rita Reid	Veronica Whyatt
Richard V. Dean	Richard Jackson	Wayde MacKay	Eddie Rice	Patsy Williams
Esther Desgagne	Eleanor Jay	Joan MacKinley	Barbara Rigney	Larry J. Wilson
Eric DesRoches	Milton Jenkins	Henry C. MacLean	Mae Robichaud	Lawrence P. Wood
Blois Dickieson	Allison M. Jewell	Margaret C. MacLean	Joost Roggeveen	George Wright
Phyllis Dobson	Nirmal Joshi	Rena MacLean	Keptin John Joe Sark	Bruce F. Zakem

Thank you to the following funeral homes for facilitating in-memoriam donations in support of the QEH Foundation in 2022-23:

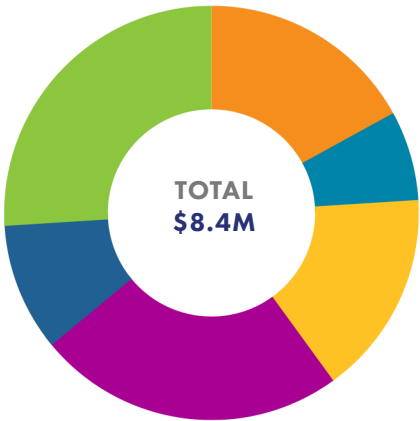
Belvedere Funeral Home  
Central Queen's Funeral Home  
Dingwell Funeral Home  
East Prince Funeral Home  
Ferguson-Logan Montague Funeral Home  
Hennessey Cutcliffe Charlottetown Funeral Home

Hillsboro Funeral Home  
MacLean Funeral Home Swan Chapel  
Moase Funeral Home  
North Shore Funeral Home  
Southern King's & Queen's Funeral Home

# Staying Accountable

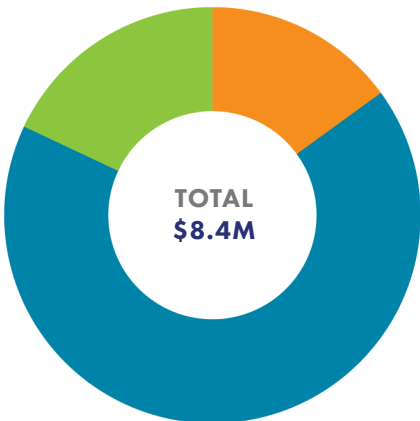
## Where Revenue Came From

<b>ANNUAL CAMPAIGN</b> (NOTE 1)	<b>\$1,422,828</b>
<b>MAJOR GIFTS</b> (NOTE 2)	<b>\$2,173,542</b>
<b>SIGNATURE FUNDRAISING EVENTS</b> (NOTE 3)	<b>\$1,368,172</b>
<b>PLANNED GIVING</b> (NOTE 4)	<b>\$608,261</b>
<b>REALIZED INVESTMENT INCOME</b>	<b>\$884,600</b>
<b>PROVINCIAL GOVERNMENT</b> (NOTE 5)	<b>\$2,000,000</b>
<b>TOTAL REVENUE</b>	<b>\$8,457,403</b>



## Where Revenue Went

<b>DONATIONS MADE TO QEH FOR MEDICAL EQUIPMENT</b> (NOTE 6)	<b>\$5,701,054</b>
<b>ENDOWMENT FUND</b> (NOTE 7)	<b>\$1,483,009</b>
<b>FUNDRAISING AND OPERATING</b> (NOTE 8)	<b>\$1,273,340</b>
<b>TOTAL INVESTED</b>	<b>\$8,457,403</b>



1. The Friends for Life Annual Campaign includes all gifts under \$10,000, not made through a Signature Event.

2. Major Gifts Campaign includes all gifts \$10,000 and above, not made through a Signature Event. Does not include multi-year pledge amounts.

3. Signature Events include QEH Big Day of Giving, Yuletide Gala Auction, and Harry MacLauchlan ‘Great Day’ Fore Health Memorial Golf Tournament. All costs associated with these events are included in Operating Costs. (Note 7)

4. Planned Giving includes bequests, realized gifts of life insurance, gifts equivalent to life insurance premiums.

5. Funding from Provincial Government, received in October 2022 and March 2023.
6. Donations to the Queen Elizabeth Hospital are made when equipment arrives on site.

7. Donations directed to endowment fund by the donor and unrestricted bequests.

8. Costs associated with Friends for Life Campaign, Signature Events, CRA receipting requirements, investment fees, banking fees, credit card transaction fees, actuary fees, planned gift life insurance premiums, stewardship, secure software for donor database, website hosting, wages, benefits and contract services, print and postage costs, and other program costs associated with a robust philanthropic program.

The above revenue does not reflect unrealized gains on investments.  
Copies of the audited financial statements are available by contacting the QEH Foundation  
at (902) 894-2425 or online at [www.qehfoundation.pe.ca](http://www.qehfoundation.pe.ca)





CARE TODAY FOR TOMORROW

For more information or to make a donation please contact:

**QE Foundation**

PO Box 6600

Charlottetown, PE C1A 8T5

Tel: (902) 894-2425

Email: [info@qehfoundation.pe.ca](mailto:info@qehfoundation.pe.ca)

 QE Foundation

 @qehfoundation

 @QEFoundation

[www.qehfoundation.pe.ca](http://www.qehfoundation.pe.ca)



**NICK LYNCH**  
QE MEDICAL RADIATION TECHNOLOGIST

THIS REPORT HAS BEEN PROUDLY DESIGNED IN-HOUSE AT THE QE FOUNDATION